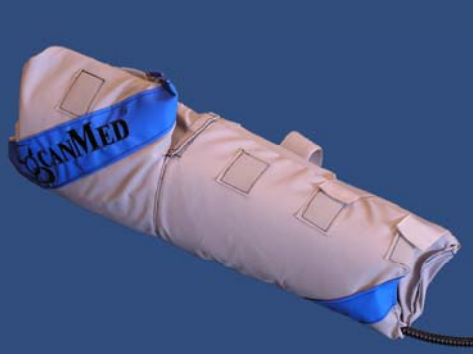


SemiFlex™ Long Bone Array



Model 166
Medium (4 CH)

Model 167
Large (4 CH)

Model 168
Medium (8 CH)

Model 169
Large (8 CH)

Description

The Long Bone coil (Joint to Joint or J-J) is based on our patented bilateral lower array and conforms to the patient while positioning the elements as close as possible to areas of interest. This semi-flexible array comfortably wraps around the patient's leg or arm. This coil design comes in two sizes – medium and large, as listed below. This is a receive-only phased array coil.

Suggested Clinical Applications

- Soft tissue and bone imaging of one extremity, as allowed by the MRI system.
- Magnetic resonance peripheral angiography.
- Medium: Adult shoulder through wrist and knee to ankle.
- Large: Adult hip through knee.

Product Specifications

- **Field Strengths:** 1.5T, 1.0T, 3.0T
- **Number of Elements:** 8-12
- **Weight:** 4 lbs (1.8 kg)
- **Ship Weight:** 10 lbs (4.5 kg)
- **Cable Length:** 72 in (183 cm)
- **Quality Factor (Q):**
Unloaded: 460 @ 64 MHz
Loaded: 40 @ 64 MHz

Physical Size:

Size	Dia	Length
Medium	16 cm	62 cm
Large	21 cm	64 cm

Warranty/Repair Policy

Product is warranted to be free from defects in materials and workmanship for a period of two years from date of purchase. Typical turn-around time for repair/replacement of defective part(s) is 48 hours after receipt of defective product. Please see the published warranty for details.

System Compatibility

GE Excite®, GE Excite® HD, GE Excite® HDx, GE Signa® LX (4CH), and others. Contact your ScanMed sales representative for details.

Quality Assurance

All products are designed and manufactured under an ISO 13485/9001 registered quality system.



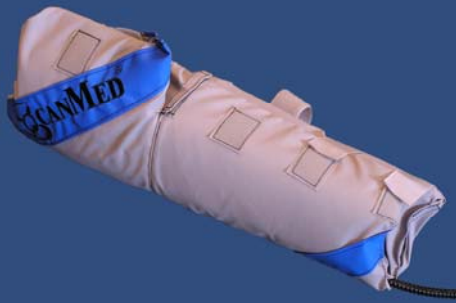
Manufacturer

ScanMed of Resonance Innovations LLC
9840 S. 140th St., Suite 8
Omaha, NE 68138
(402) 934-2650 (402) 778-9699 (FAX)

www.scanmed.com

info@scanmed.com

SemiFlex™ Long Bone Array



Model 166

Medium (4 CH)

Model 167

Large (4 CH)

Model 168

Medium (8 CH)

Model 169

Large (8 CH)



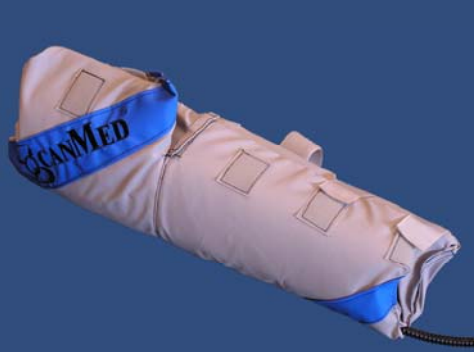
Manufacturer

ScanMed of Resonance Innovations LLC
9840 S. 140th St., Suite 8
Omaha, NE 68138
(402) 934-2650 (402) 778-9699 (FAX)

www.scanmed.com

info@scanmed.com

SemiFlex™ Long Bone Array



Model 166

Medium (4 CH)

Model 167

Large (4 CH)

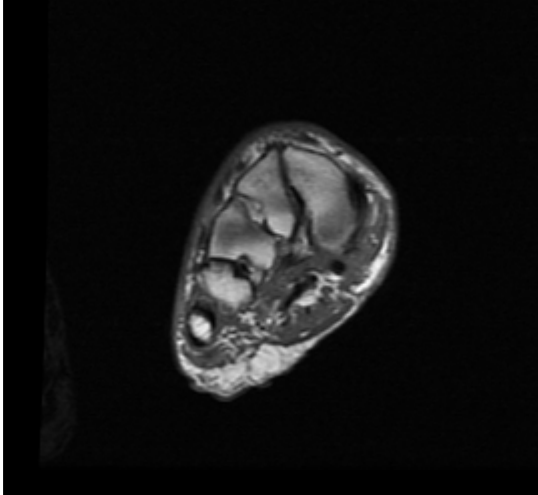
Model 168

Medium (8 CH)

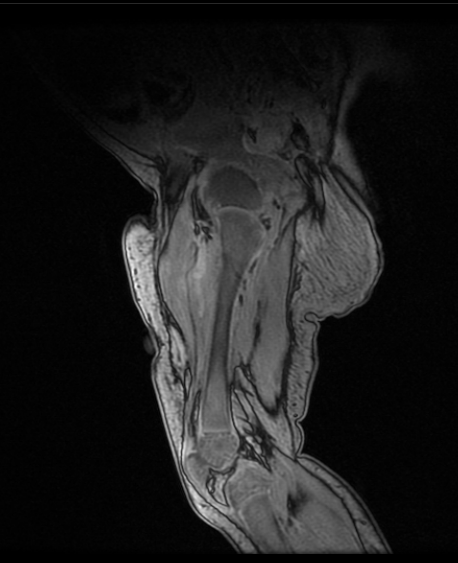
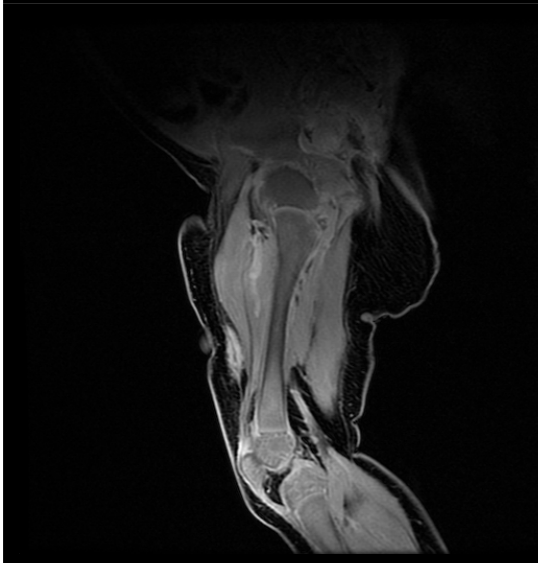
Model 169

Large (8 CH)

Lossless JPEG compression, selection v...



Lossless JPEG compression, selection v...



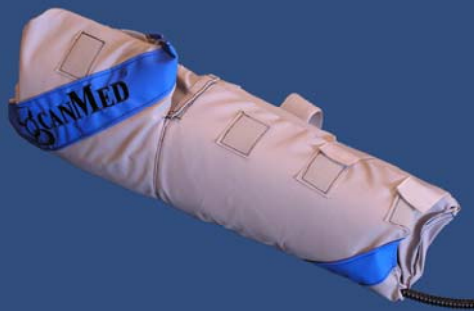
Manufacturer

ScanMed of Resonance Innovations LLC
9840 S. 140th St., Suite 8
Omaha, NE 68138
(402) 934-2650 (402) 778-9699 (FAX)

www.scanmed.com

info@scanmed.com

SemiFlex™ Long Bone Array



Model 166

Medium (4 CH)

Model 167

Large (4 CH)

Model 168

Medium (8 CH)

Model 169

Large (8 CH)



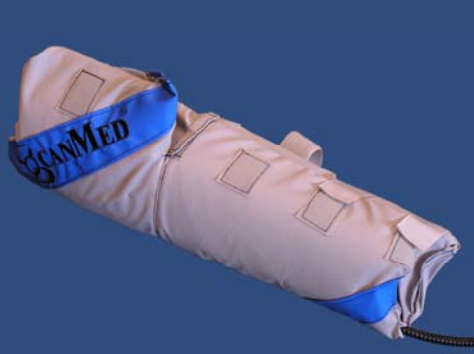
Manufacturer

ScanMed of Resonance Innovations LLC
9840 S. 140th St., Suite 8
Omaha, NE 68138
(402) 934-2650 (402) 778-9699 (FAX)

www.scanmed.com

info@scanmed.com

SemiFlex™ Long Bone Array



Model 166

Medium (4 CH)

Model 167

Large (4 CH)

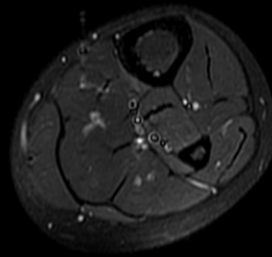
Model 168

Medium (8 CH)

Model 169

Large (8 CH)

Lossless JPEG compression, selection value 1, point transform 0, compression ratio ...



Lossless JPEG compression, selection value 1, point transform 0, compression ratio ...



Manufacturer

ScanMed of Resonance Innovations LLC
9840 S. 140th St., Suite 8
Omaha, NE 68138
(402) 934-2650 (402) 778-9699 (FAX)

www.scanmed.com

info@scanmed.com

© 2011 Resonance Innovations LLC
MB16XGE01-R5